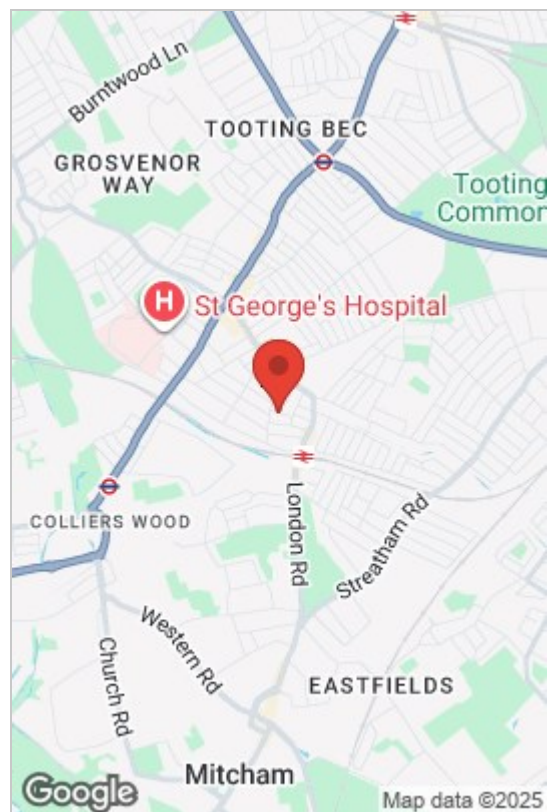
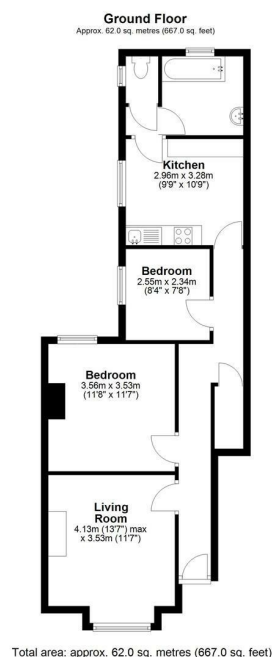




Loubet Street, London, SW17 9HD
£1,950 Per Month

 2  1  1  D





- Two Doubles
- Own Front Door
- Fresh Feel throughout
- Central Heating
- Garden
- Great Location
- Double Glazing
- Close to a number of amenities and local shops

A modern and spacious top floor, two-bedroom maisonette situated in a quiet residential road within easy walking distance of Tooting Broadway tube station. The property has a large living room, a generous double bedroom and a large single bedroom making it ideal for professional sharers or a couple. There's a fully fitted kitchen, a tiled bathroom with shower and a separate WC. The property has central heating, double glazed windows, hard wood flooring in the hall and living room, fitted carpets in both bedrooms and tiled flooring in the bathroom and kitchen. There is also a good sized private garden.

The biggest advantage to this property is the close proximity to the Northern line at Tooting Broadway which takes around 20 minutes to Central London and the City. Tooting Broadway benefits from a large selection of retail shops, bars, and coffee shops. Perfect for the modern day professional or couple. Viewings recommended. This is one not to be missed, call us now to avoid disappointment

Council Tax Band: C

These particulars, whilst believed to be accurate are set out as a general outline only for guidance and do not constitute any part of an offer or contract. Intending purchasers should not rely on them as statements of representation of fact, but must satisfy themselves by inspection or otherwise as to their accuracy. No person in this firm's employment has the authority to make or give any representation or warranty in respect of the property.

